

The Medicare Improvements for Patients and Providers Act of 2008 (MIPPA) mandates that Medicare Special Needs Plans (SNP) must provide a “Model of Care” for all beneficiaries.

With extensive health management expertise and more than a decade of experience, Health Integrated is uniquely positioned to partner with health plans to assist them in meeting MIPPA requirements.

Solution Benefits:

- CMS Compliant
- Rapid deployment
- Tailorable to plan needs
- Shared interpretation of regulations
- Backed by more than a decade of experience

A Turnkey SNP Model of Care Compliance Solution

Health Integrated’s SNP Model of Care solution is a rapidly deployable, turnkey program that is tailored to unique health plan needs within the greater context of MIPPA requirements. The solution unlocks the value of care management while meeting compliance requirements.

Complementary to a health plan’s own care management strategies and programs, Health Integrated’s SNP Model of Care is in lock step with CMS’s intentions to improve coordination and quality of care while reducing health care costs. Plans that implement Health Integrated’s SNP Model of Care will share with other plans a collective interpretation of the CMS regulations and best practices in care management.

Scope of Services

Health Integrated is flexible to the needs of our customers, and offers a fully delivered program that focuses on member assessment, member health management (including integrated chronic condition management, Case Management and Utilization Management) and outcomes measurements. The health plan maintains the SNP member enrollment and network management functions. Health Integrated’s turnkey program components include:

- Health risk assessment
 - Initial within 90 days of enrollment
 - Annual reassessment
 - Reassessment upon change in condition
 - Physical, psychosocial, and functional need focus
- Integrated Care Plan (ICP) for each beneficiary
 - Developed with the individual where feasible
 - Includes goals and objectives, measurable outcomes, specific services and benefits
- Interdisciplinary Care Team (ICT) for beneficiaries
 - Medical, behavioral and social expertise
- Evaluation of care effectiveness

Meets CMS Requirements

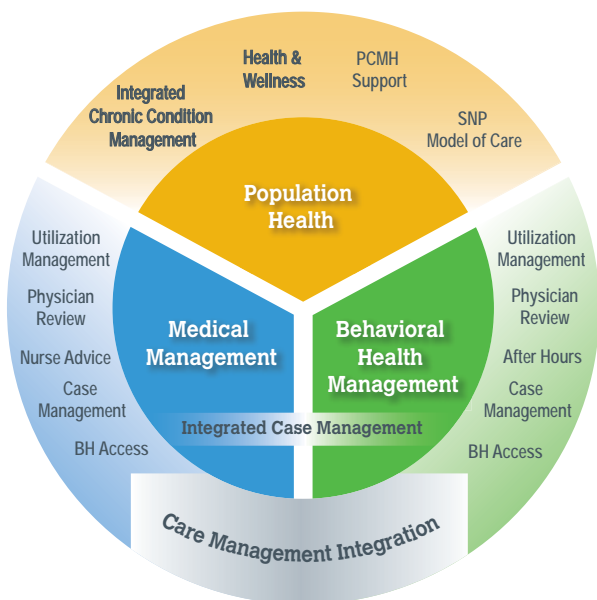
- Health Risk Assessment
- Integrated Care Plan
- Interdisciplinary Care Team
- Evaluation of Care Effectiveness

Experience You Can Trust

Unmatched Experience	<ul style="list-style-type: none"> • Extensive expertise in population health management • Deep understanding of vulnerable populations
Management of simultaneous member and provider outreach campaigns	<ul style="list-style-type: none"> • HRA completion, re-assessment, follow up • Provider communications
Clinical management program and system	<ul style="list-style-type: none"> • Medication, chronic condition, psychosocial assessments • Problems, goals, personal intervention pathways
Care coordination	<ul style="list-style-type: none"> • Automated and manual mechanisms to generate notifications • System captures all care coordination communications and alerts
Advanced analytics and predictive modeling	<ul style="list-style-type: none"> • Risk score for stratification • Insight into utilization trends and other opportunities for intervention

Get Started Now!

Getting started is easy. Simply set up a call with a Health Integrated SNP Model of Care Specialist. To do so, contact your account representative or Health Integrated Marketing at 800.323.0286 or marketing@healthintegrated.com.



Health Integrated is the leading innovation partner for health plans, providing evidence-based solutions to accelerate achievement of health management goals for clinical outcomes, quality measures and cost containment. For more information, visit www.healthintegrated.com.

ACAP Association for Community Affiliated Plans

Health Integrated is proud to be an ACAP Strategic Ally.



Health Integrated is proud to be an MHPA Business Partner.

Contact Us:

10008 N Dale Mabry Hwy

Tampa, FL 33618

P: 813.388.4000

800.323.0286 toll free

F: 813.388.4001

Email: marketing@healthintegrated.com

www.HealthIntegrated.com